



How can we, as a city,
offer our residents and visitors sufficient
parking spaces in the densely populated
inner city and keep them affordable?



**MY
PARKING SPACE**





THE CHALLENGE

Parking space is not being used efficiently.

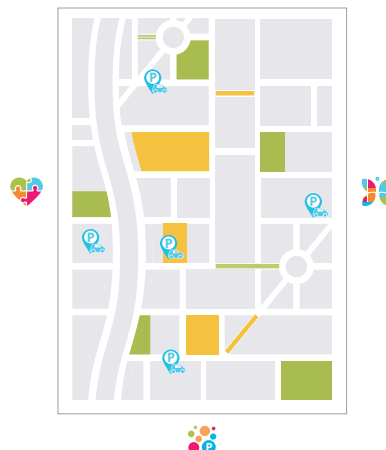
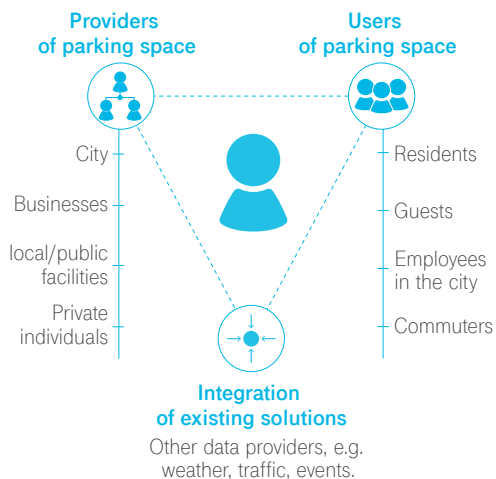
The parking pressure in cities is high. There is not necessarily more space available. At the same time, existing areas are not being used ideally. How can the situation of stakeholders be improved?

RESIDENTS	PROPERTY OWNERS	GUESTS
"When I come home as a resident after work with a crate of water in my car, I want to find a parking space as close to the house as possible."	"If, as the owner of a property, I have unused parking space, I would like to offer it via a reputable/trustworthy solution so that I can use this source of revenue."	"If I want to go shopping in the city center, I want to park cheaply, predictably and close to the city center, so that I save time and money."

THE SOLUTION APPROACH

Better connection of supply and demand

A closer look at the target group moves digital technologies and the integration of existing solutions into focus. "My Parking Space" describes the possibility of redefining residential parking and private rental. Intelligent control, innovative technologies and the integration of existing solutions enable better use of existing parking space in the city center..





THE MODEL (1)

Shared Parking makes private parking space available.

Flex Parking secures a parking space right in front of your door.

The first module, “Shared Parking”, makes private parking spaces available to all motorists via a digital application. Users register with the service and enter a basic profile.

They make a reservation, are navigated to the parking space and receive a confirmation upon arrival and departure. The app allows changes to be made and problems solved in real-time.

SHARED PARKING

Private parking spaces expand the offer.



FLEX PARKING

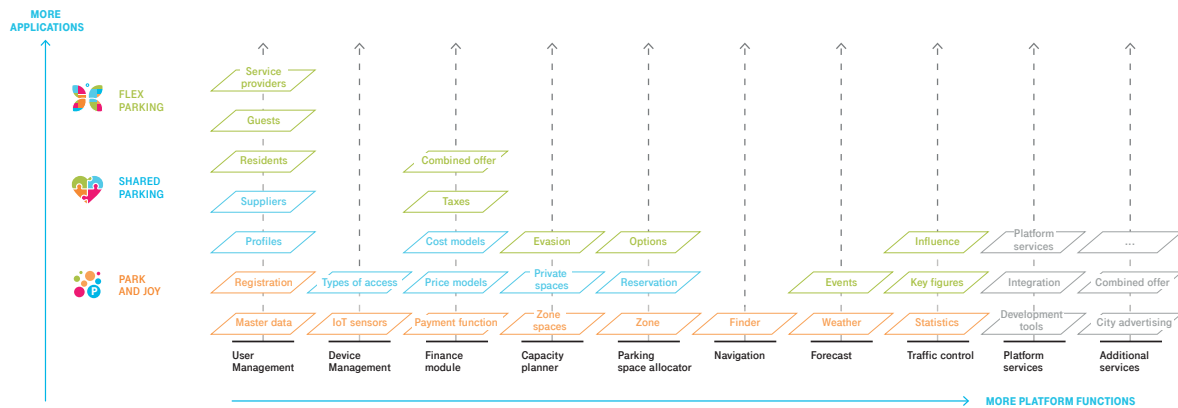
Optimal use of parking space for residents and guests.



VISION

A modular platform connects different services.

The aim is to create a modular platform that – from an end-to-end perspective – integrates a wide variety of solution elements and creates value for all stakeholders beyond the actual parking process.



MY PARKING SPACE

FINDINGS AND NEXT STEPS

FINDINGS FROM CO-CREATION

There are already various digital applications for parking space management today. From the point of view of the city representatives present, however, these only offer some of the functions contained in the concept. And they largely serve the profit of the operator and do not represent a holistic solution to the challenges from the city's perspective.

Targeted and specific solutions are needed. However, it seems more important to the participants than "just another new app" that elements and stakeholders are linked and integrated in a meaningful way, since only in combination can a larger lever for solving the parking problem arise.

OUTLOOK AND NEXT STEPS

It is expected that a strong partner will act across all stakeholders and in a trustworthy manner, so that applications will not only work for individual municipalities and cities, but also across federal states.

As such, the visions are moving towards a modular system: It must have a feasible entry point for the respective challenge of a municipality and then be expandable for further projects. New developments, new modules and updates would then ideally be available to all interested parties via an open platform. The highest priority for cloud- and server-based applications is data security.

»We are delighted with the efficiency of the co-innovation procedure and would like to retain this speed for piloting our solution.«

DARMSTADT